

Figure S1. Marfey's analysis and hydrolysis of amino acid by dissolving in HCl. The photo was drawn via Analyst® LC/MS software version 2.1.

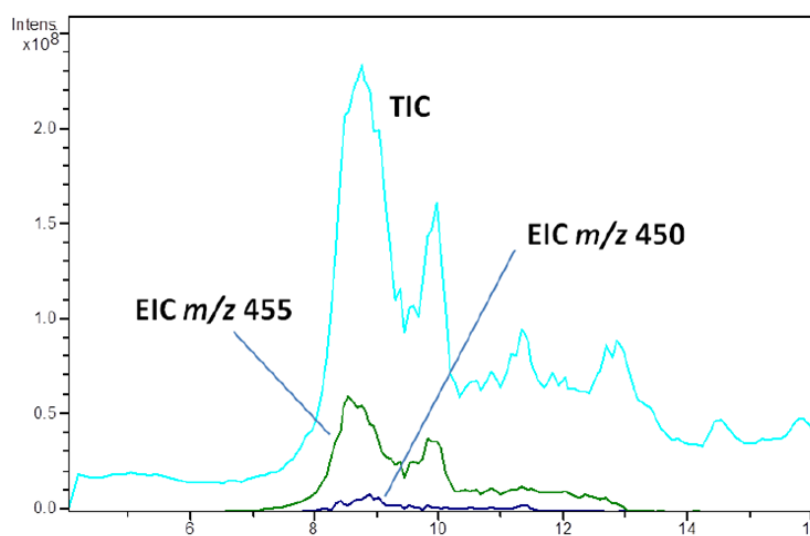


Figure S2. Comparison of Ion chromatograms of protonated [MH^+] new peptide aldehyde compound (450 m/z) cultivated on normal medium $14N$ and protonated from $15N$ -labeled new peptide aldehyde compound (455 m/z) cultivated on labeled medium $15N$. The x-axis represents retention time (min), and the y-axis represents signal intensity. Intensity is measured in counts per second (cps).

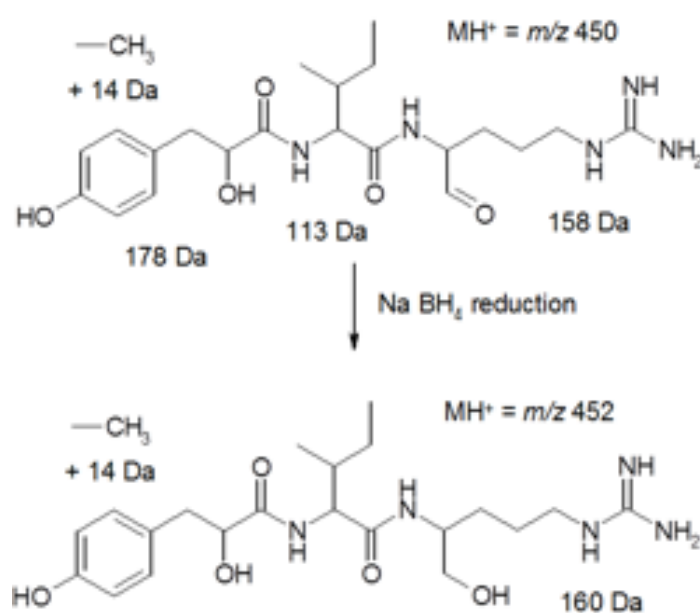


Figure S3. Structures of new peptide aldehyde compound before and after (452 m/z) reduction with $NaBH_4$.

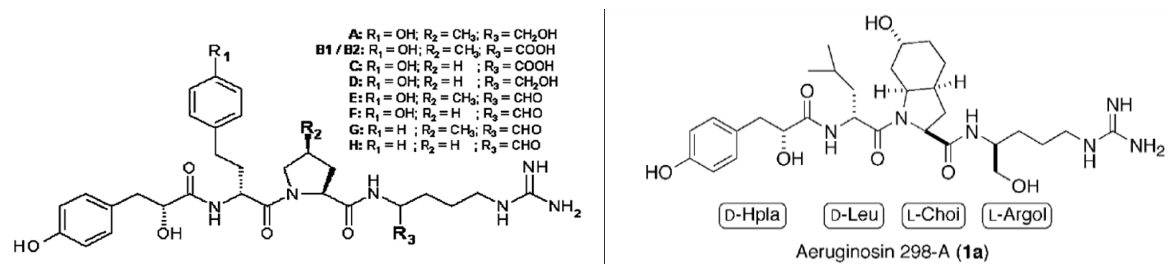


Figure S4. Structures of Spumigin (left side) and Aeruginosin (right side).