



# The Role of Cell Wall Degrading Enzymes in Antagonistic Traits of *Trichoderma virens* Against *Rhizoctonia solani*

Soleiman Ghasemi<sup>1</sup>, Naser Safaie<sup>1\*</sup>, Samira Shahbazi<sup>2</sup>, Masoud Shams-Bakhsh<sup>1</sup>, Hamed Askari<sup>2</sup>

<sup>1</sup> Department of Plant Pathology, Faculty of Agriculture, Tarbiat Modares University, Tehran, Iran.

<sup>2</sup> Nuclear Science and Technology Research Institute (NSTRI), Atomic Energy organization of Iran (AEOI), Alborz, Iran.

\*Corresponding author: Naser Safaie, Department of Plant Pathology, Faculty of Agriculture, Tarbiat Modares University, Tehran, Iran.

Tel: +98-2148292346, Fax: +98-2148292300, E-mail: nsafaie@modares.ac.ir

**Background:** High antagonistic ability of different *Trichoderma* species against a diverse range of plant pathogenic fungi has led them to be used as a biological fungicide in agriculture. They can also promote plant growth, fertility, resistance to stress, and absorption of nutrients. They are also opportunistic and symbiotic pathogens, which can lead to the activation of plant defense mechanisms.

**Objectives:** The aim of this present study was to investigate possible enhancement of lytic enzymes production and biocontrol activity of *T. virens* against *Rhizoctonia solani* through gamma radiation and to find the relationship between changes in lytic enzyme production and antagonistic activity of *T. virens*.

**Material and Methods:** Dual culture conditions were used to evaluate the antagonistic effect of *T. virens* and its gamma mutants against *R. solani*. Then, their chitinase and cellulase activities were measured. For more detailed investigation of enzymes, densitometry pattern of the proteins was extracted from the *T. virens* wild-type and its mutants were obtained via SDS-polyacrylamide gel electrophoresis.

**Results:** The mutant T.vi M<sub>8</sub>, *T. virens* wild-type and mutant T.vi M<sub>20</sub> strains showed the maximum antagonistic effects against the pathogen, respectively. Data showed that the mutant T. vi M<sub>8</sub> reduced the growth of *R. solani* by 58 %. The mutants revealed significantly different (p<0.05) protein contents, chitinase and cellulase production (mg.mL<sup>-1</sup>) and activity (U.mL<sup>-1</sup>) compared to the wild-type strain. The highest extracellular protein production in the supernatant of chitinase and cellulase TFM was observed for the T.vi M<sub>11</sub> and T.vi M<sub>17</sub> strains, respectively. The T.vi M<sub>12</sub> and wild-type strains secreted chitinase and cellulase significantly more than other strains did. Densitometry of SDS-PAGE gel bands indicated that both the amount and diversity of chitinase related proteins in the selected mutant (T. vi M<sub>8</sub>) were far higher than those of the wild-type. The diversity of molecular weight of proteins extracted from the *T. virens* M<sub>8</sub> (20 proteins or bands) was very high compared to the wild-type (10 proteins) and mutant T.vi M<sub>15</sub> (2 proteins).

**Conclusions:** Overall, there was a strong link between the diversity of various chitinase proteins and the antagonistic properties of the mutant M8.

**Keywords:** Biocontrol, Cellulase, Chitinase, Mutant, *Rhizoctonia solani*, *Trichoderma virens*

## 1. Background

*Trichoderma* species are known as an effective biological control agent against different plant pathogenic fungi, such as *Rhizoctonia solani*, *Pythium* spp. (1), *Macrophomina phaseolina* (2), and *Sclerotinia rolfii* (3). *Trichoderma* species ability to kill plant pathogenic fungi has led them to be used as a biological fungicide in agriculture (4). *Trichoderma* species can also enhance plant growth, fertility, resistance to stress, and absorption of nutrients (5). In some cases, these fungi are also known as opportunistic and symbiotic

pathogens, which can lead to the activation of plant defense mechanisms (6). Most fungi attacked by *T. harzianum* have cell walls that contain chitin as a structural backbone and laminarin (β-1, 3-glucan) as a filling material (7). *T. virens* can penetrate into *R. solani* body and grow extensively within mycelium through destroying the cell wall. This mechanism of action shows that the fungus produces enzymes chitinases and β-1, 3 glucanases. Further, some other metabolites are produced by *T. virens*, thus improving enzyme production and activity in such fungi through mutation

breeding, may enhance their antagonistic activities (8). Furthermore, *T. viride* has a high capability to produce other enzymes involved in detoxification or degradation of different mycotoxins synthesized by the plant pathogens. Finding a suitable *Trichoderma* strain with high biocontrol and plant growth promoting capabilities is the first step in biological control. In addition to isolation of native strains from different sources, induced gamma radiation mutation is known as one of the widely used methods to enhance the antagonistic potential of *Trichoderma* fungi. The mutation achieved through gamma rays has resulted in enhanced growth, competition, and sporulation of the fungus simultaneously along with higher expression of the genes associated with increased resistance against *R. solani* (9). It has been shown that the biocontrol efficiency of gamma mutants of *T. harzianum* has also increased dramatically against *Sclerotium cepivorum* and *Sclerotium rolfsii* (10). Marzano *et al.* showed that the competition between *T. harzianum* isolate mutated through ultraviolet radiation vs. *F. oxysporum* f. sp. *lycopersici* improved via enhancing the tolerance to growth-inhibitory metabolites produced by *F. oxysporum* (11). Recent studies have indicated that  $\gamma$ -radiation could affect morphological characteristics such as sporulation of fungus, mycelia colonies shape, color and its growth rate. The mutants had higher inhibitory capability against *R. solani* (12). Many studies indicated that  $\gamma$ -mutagenesis could improve production of metabolites and improved biological efficiencies in *T. virens* (13; 14). Production of new mutants with greater ability to secrete cellulolytic enzymes compared to the wild-type strain has been achieved by both laboratory and industrial research programs (15, 16).

## 2. Objectives

The aim of this study was to investigate possible enhancement of production of lytic enzymes and biocontrol activity of *T. virens* against *R. solani* using gamma radiation, and to find the relationship between changes in lytic enzyme production and antagonistic activity of *T. virens*.

## 3. Materials and Methods

### 3.1. Preparation of *T. virens* and *R. solani*

The wild-type *T. virens* was kindly provided by Yazd Agricultural and Natural Resources Research and Education Centre (infected soils of cucumber). The mutant isolates were prepared in Nuclear Agriculture School, Alborz, Iran (14). The fungi were maintained on potato dextrose agar (PDA) prepared according to the manufacturer's instructions. The pathogenic fungus

*R. solani* was obtained from the Microbial collections of Tarbiat Modares University. The fungi were grown at  $28 \pm 2$  °C on potato dextrose agar (PDA) prepared according to the manufacturer's instructions and maintained at 4 °C.

### 3.2. Antagonistic Activity of Wild-type and Mutant *T. virens* Strains Against *R. solani* Under In Vitro Conditions

The antagonistic activity of *T. virens* strains against *R. solani* was determined using dual culture technique. Mycelia discs (5 mm diameter) were cut out from actively growing pure cultures of all strains (*T. virens* and *R. solani* strains) on PDA at 28 °C for 3 days and placed on the opposite sides of 100 mm petri plates containing PDA. The plates were incubated in darkness at 28 °C. The growth of the pathogen was measured after 3 days, and mycelia growth inhibition percentage were calculated, following the formula:  $I \% = (1 - C_n / C_o) \times 100$ .  $C_n$  refers to the average colony diameter of pathogen in the presence of the antagonist and  $C_o$  denotes the average colony diameter of control.

### 3.3. Plant Pathogen Cell Wall Preparation

The *R. solani* cell wall powder was produced according to the method of Elad *et al.* (18) with some modifications. The *R. solani* strain was inoculated into 250 mL flasks containing 50 mL of PDB and incubated at 28 °C for 7 days. The mycelia were filtered, washed thoroughly with autoclaved distilled water, and homogenized with a homogenizer, for 5 min at the highest speed. The mycelium suspension was centrifuged at 4500 g for 7 min at 4 °C and washed twice with sterile saline solution (14). The pellet was collected and lyophilized. The dry cell wall of the pathogen was used as substrate for the production of degrading enzymes.

### 3.4. Cell Wall Degrading Enzymes Production

The wild-type and mutant strains of *T. virens* were cultured in MYG (Malt extract, Yeast extract, Glucose) agar medium at 28 °C for 7 days (18). The spore suspensions were prepared from seven-day-old cultures in a sterile saline solution ( $1 \times 10^7$  spores.mL<sup>-1</sup>). The spores were pelleted through centrifugation at  $4500 \times g$  for 10 min, and washed twice with a sterile saline solution. The seed cultures were produced in *Trichoderma* complete medium (TCM) (14). The medium pH was adjusted to 4.8 and supplemented with 0.3% w/v of glucose. The cultures were prepared in a volume of 50 ml of TCM in 250 mL Erlenmeyer flasks and were shaken at 180 rpm at 28 °C for 24 h. Specifically, 1 mL of spore suspension was inoculated in each flask.

The grown mycelia were collected and transferred to 50 ml of *Trichoderma* fermentation medium (TFM) for inducing enzyme production (14). For cellulase production, the medium was supplemented with 0.5% w/v of Phosphoric Acid Swollen cellulose (PASC) and adjusted to pH 4.8. For chitinase production, the medium was supplemented with 0.5% (w/v) of colloidal chitin, with pH adjusted to 5.5. The growth conditions were as described previously (19). In addition, the dry cell wall of *R. solani* was used as an inducer substrate for producing degrading enzymes against the pathogen. Triplicate flasks were harvested after 48 h. *Trichoderma* fermentation medium (TFM) was centrifuged for 7 min at 4500 ×g at 4 °C and used for protein plus extracellular enzyme activity estimation (14).

### 3.5. Estimation of Protein

After 48 h fermentation, the Bradford's dye binding method was used for estimating the protein content in the TFM supernatant (20). Bovine serum albumin (BSA) was considered as a standard protein.

### 3.6. Estimation Chitinase and Cellulase Activity

The chitinase assay was estimated by the method of Zeilinger *et al.* (21). One unit chitinase activity is the amount of enzyme producing 1 µmol of N-acetylglucosamine from the chitin source in the reaction mixture/mL/h under standard conditions. Overall, the cellulase activity of the samples was determined by the method of Shahbazi *et al.* (14). For the filter paper activity (FPase) assay, the Whatman no.1 strips were used as the substrate. Carboxymethyl cellulose (CMC) was used to measure CMCase or endoglucanase activity. The amount of released sugar was assayed via the dinitrosalicylic acid (DNS) method using glucose as the standard. The release of glucose molecules from substrates was considered as quantitative criteria for avicelase activity by the DNS method with glucose as the standard. The International Unit (IU) of activity is defined as the amount of enzyme releasing 1 µmol of glucose per hour in a standard assay (14).

### 3.7. Electrophoresis and Molecular Size Determination

The molecular weight of the proteins was determined by SDS-PAGE with a 4% (stacking) and 12.5% (separating) polyacrylamide gel based on Laemmli (22). The gels were stained with Coomassie Brilliant Blue R-250 in methanol-acetic acid-water (5:1:4, v/v), and decolorized in methanol-acetic acid-water (1:1:8, v/v) (14, 18). The densitometry zymogram pattern of the proteins extracted from the *T. virens* wild-type and mutant strains were provided by Gel-Pro (Ver.6) and

analyzed using one-dimensional gel analysis software: Core Laboratory Image Quantification Software (CLIQS).

### 3.8. Statistical Analysis

All experiments were performed with three replications, based on a completely randomized design. The experimental data were subjected to analysis of variance (ANOVA) followed by a Duncan's test. Significance was defined at  $p < 0.05$ . The SPSS (developer 13) program was used for all statistical analyses.

## 4. Results

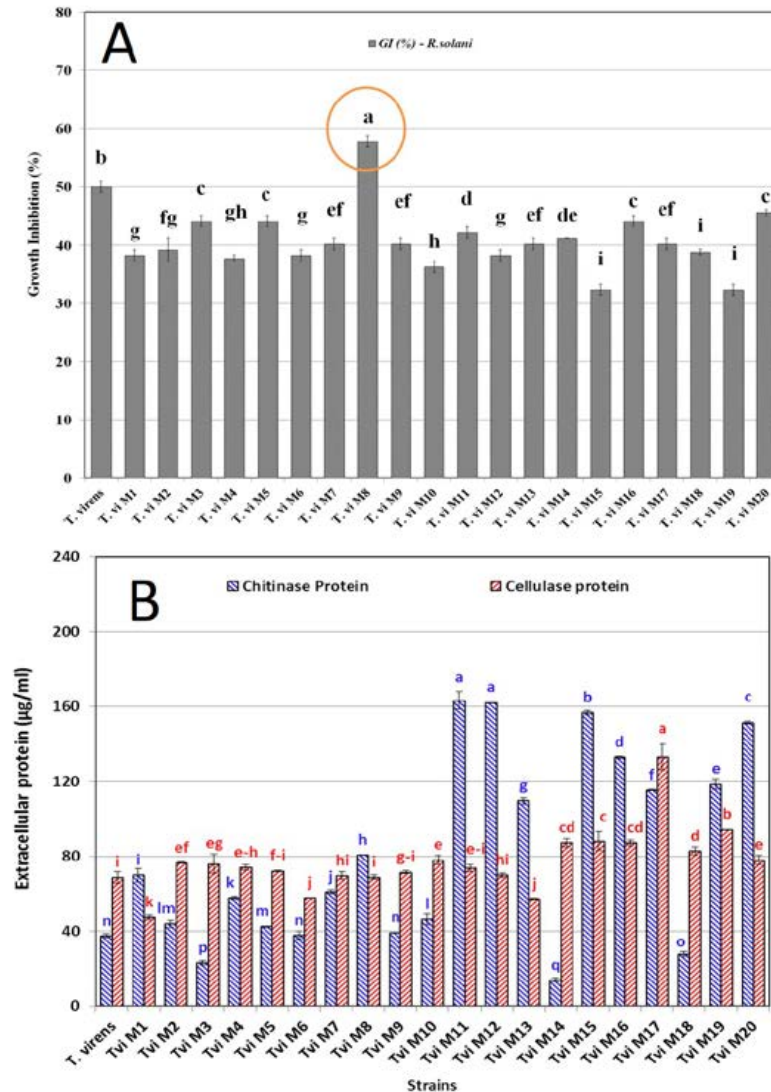
### 4.1. Antagonistic Activity of *T. virens* Strains Against *R. solani* in Dual Culture

The macroscopic observations during dual culture of *T. virens* against *R. solani* showed that the antagonistic mechanisms of the fungus included parasitism and antibiosis. The results revealed a significant difference in growth inhibition percentage of *R. solani* colonies. On the other hand, the isolates *T.vi* M<sub>8</sub>, *T.vi* wild-type and *T.vi* M<sub>20</sub> showed maximum antagonistic activity against *R. solani*, respectively (**Fig.1A**). *T.vi* M<sub>8</sub> reduced the growth of *R. solani* by 58 %.

### 4.2. Estimating the Chitinase and Cellulase Protein Production

The concentration of extracellular protein produced by different *T. virens* strains enzyme complexes was determined via the dye binding method of Bradford. The results are shown in **Figure 1B**. The highest extracellular protein production in the supernatant of chitinase TFM belonged to the strains *T.vi* M<sub>11</sub>, *T.vi* M<sub>12</sub>, *T.vi* M<sub>15</sub> and *T.vi* M<sub>20</sub>, respectively. The supernatant of cellulase TFM of *T.vi* M<sub>17</sub>, *T.vi* M<sub>19</sub> and *T.vi* M<sub>15</sub>, had the highest extracellular protein production, respectively. The results showed that protein production in both chitinase and cellulase TFM (µg.mL<sup>-1</sup>) for all mutants had a significant difference at the level of  $p < 0.05$  compared to the with wild-type strain.

The results of chitinase activity assay of the wild-type and mutant strains are shown in **Figure 2A**. These results indicate variations in the activity of 20 selected mutants. The chitinase activity in the mutants was significantly different ( $p < 0.05$ ) compared to the wild-type *T. virens* strains. The enzyme activity of some mutants was higher than that of the wild strain, while other isolates revealed lower activity. Generally, the chitinase activity of the studied *T. virens* isolates was affected by gamma radiation. *T.vi* M<sub>12</sub> secreted significantly more chitinase than the wild-type and other mutant strains did. In addition, *T.vi* M<sub>8</sub> showed no high difference with wild-



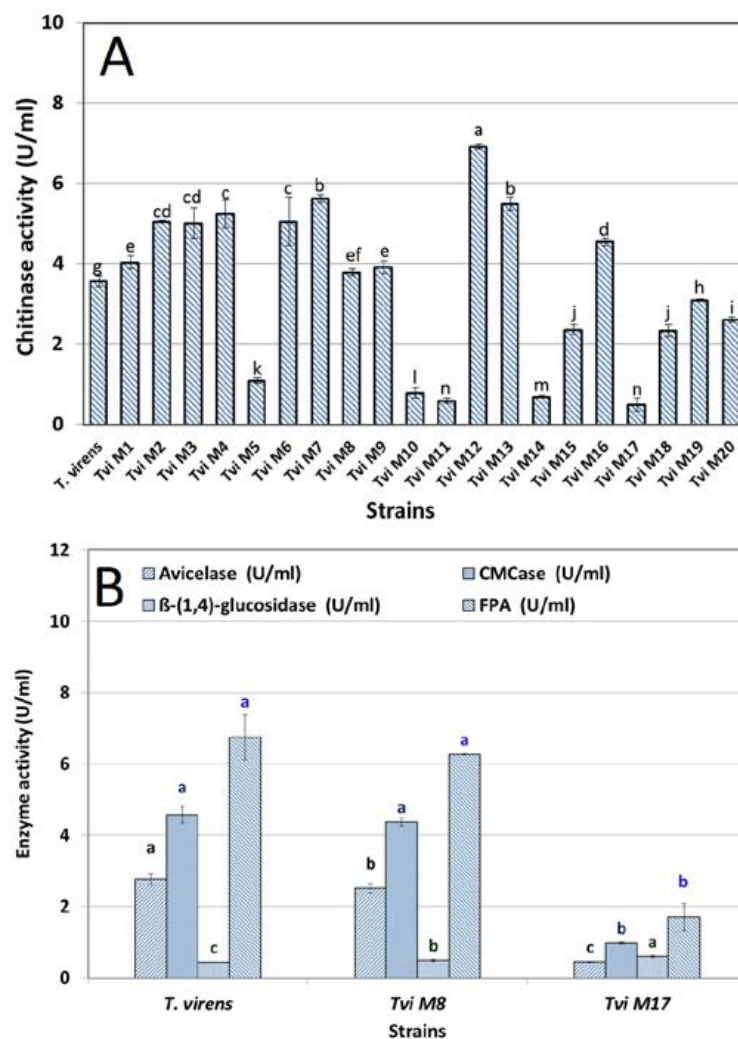
**Figure 1.** A) The efficiency of the wild-type and mutant *T. vires* strains in growth inhibition of *R. solani* after 3 days' incubation in dual culture assay B) Extracellular protein production of *T. vires* after 48 hours fermentation in TFM medium.

type regarding to the chitinase activity.

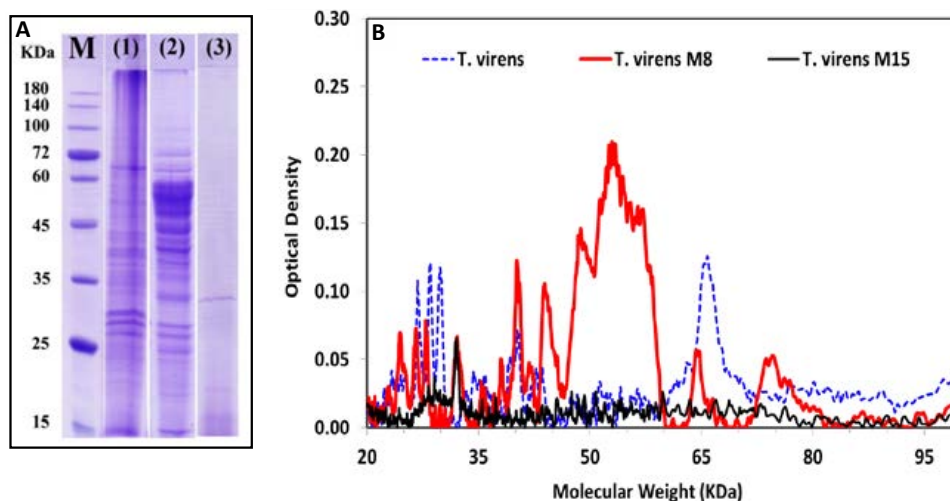
The cellulase enzyme activity (Endo- and Exo-glucanase) of the mutant and wild-type strains TFM supplemented with colloidal cellulose as a substrate were investigated. **Figure. 2B** depicts the production of endo- and exo-glucanase by mutant strain *T. vi M<sub>8</sub>* compared to *T.vi M<sub>17</sub>* and the wild-type strains. In the case of exo-glucanase (U.mL<sup>-1</sup>), the results showed that *T.vi M<sub>8</sub>* and wild-type strain were not different from each other. On the other hand, *T.vi M<sub>17</sub>* had the lowest activity of exo-glucanase. The highest avicelase activity was obtained 2.3 U.mL<sup>-1</sup> for the wild-type strain. The CMCase activity did not show any significant difference between the mutant and wild-type strains (2.2 U.mL<sup>-1</sup>).

#### 4.4. Electrophoresis and Molecular Size Determination

**Figure 3** displays the electrophoresis patterns obtained by SDS- PAGE analysis of precipitated cell-free TFM supernatants and densitometry pattern of proteins extracted from the wild-type and mutant strains *T.vi M<sub>8</sub>* as powerful antagonists and *T.vi M<sub>15</sub>* as a weak one. The SDS-PAGE analysis of the crude proteins indicated the presence of different protein bands within the range of 10.5-245 KDa. Both the amount and diversity of chitinase related proteins in the cell free TFM supernatant of mutant *T.vi M<sub>8</sub>* were higher as compared to the wild-type and mutant *T.vi M<sub>15</sub>*. The densitometry of protein bands showed that the diversity of molecular weight of proteins extracted from the *T. vi M<sub>8</sub>* (20 bands of proteins) was very high compared to the wild-type



**Figure 2.** A) The chitinase activity ( $\text{U}\cdot\text{ml}^{-1}$ ) of wild-type (*T. vires*) and mutant (Tvi M<sub>1</sub>-M<sub>20</sub>) strains in TFM supernatant after 48 h incubation at 180 rpm and 28 °C. B) Cellulase (Endo- and Exo-glucanase) enzyme activity of the wild-type and mutant *T. vires* strains (Tvi M<sub>8</sub> and Tvi M<sub>17</sub>) in TFM supernatant after 48 h incubation at 180 rpm and 28 °C



**Figure 3.** The profile of chitinase enzyme proteins (A) and densitometry zymogram pattern of proteins extracted (B) from the *T. vires* wild-type and two mutant strains by Gel-Prö (Ver.6): marker (M) Prestain Protein Ladder (CinnaGen™ PR901641); (1) (*T. vires* wild-type); (2) (*T. vires* M<sub>8</sub>) and (3) (*T. vires* M<sub>15</sub>).



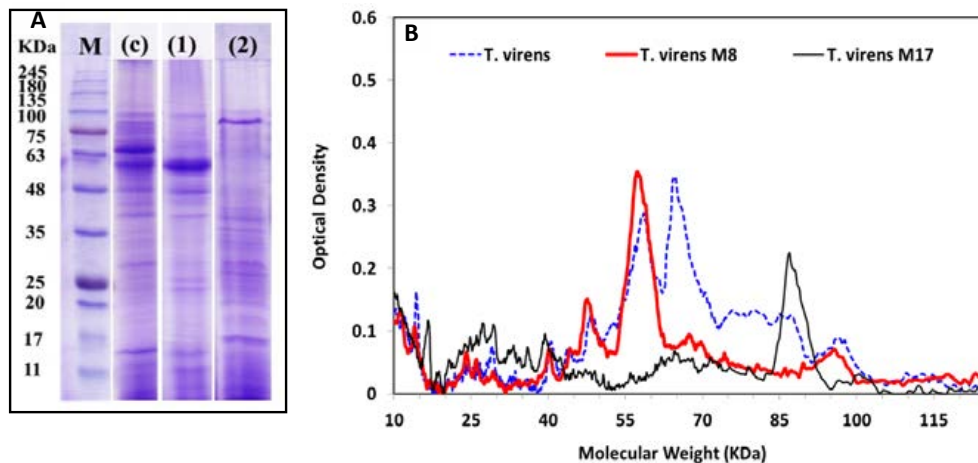
(10 bands) and mutant *T.vi* M<sub>15</sub> strains (2bands).

Extracellular cellulase protein profiles of mutant strains in the supernatant of TFM were assessed using SDS-PAGE with the results shown in **Figure 4**. Two sharp bands at molecular weights 64 and 58KDa in the protein profiles of *T. vires* wild-type were related to enzymes Cel 7A (CBH I) and Cel 6A (CBH II), respectively. The densitometry pattern of proteins showed a sharp band (38.1%) with a molecular weight of 58 KDa in *T. vires* M<sub>8</sub> which is very heavier than that of the wild-type strain (14.3%).

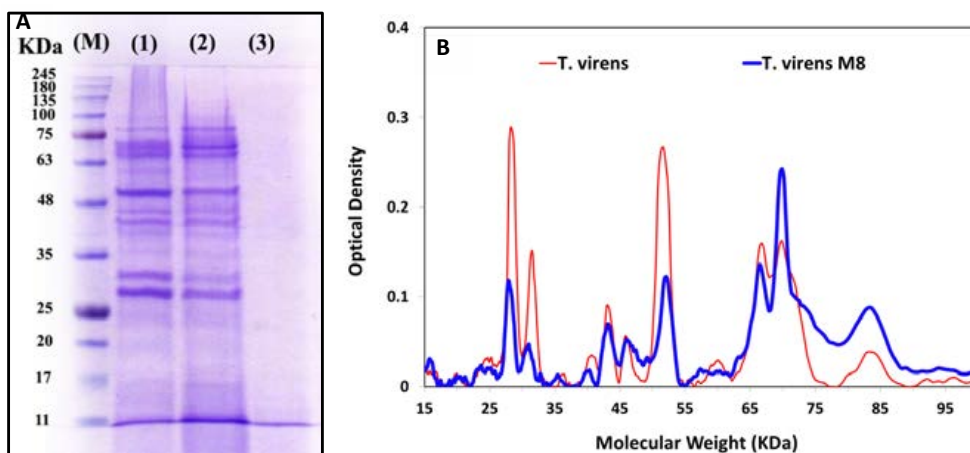
#### 4.5. Production of Cell Wall Degrading Enzymes Against *R. solani*

The selected antagonist mutant (*T.vi* M<sub>8</sub>) and the wild-type strain produced and secreted various cell wall

degrading enzymes when grown in the TFM media containing *R. solani* cell wall as the carbon source. There were differing patterns in the cell wall degrading enzyme production by various strains during mycoparasitism at 48 h incubation with pathogen cell wall (**Fig. 5**). The results showed that there is a difference between some enzymes or proteins produced by the mutant and wild-type strains, when fermented in the presence of the cell wall of the pathogen *R. solani* (**Table 1**). The extracellular protein in the *T. vi* M<sub>8</sub> (537.46 µg.mL<sup>-1</sup>) was significantly higher than that in the wild-type strain (478.5 µg.mL<sup>-1</sup>). In addition, *T. vi* M<sub>8</sub> produced more active hyphal wall degradation enzymes (10.63 U.mL<sup>-1</sup>) compared to the wild-type strain (9.14U.mL<sup>-1</sup>) when the enzyme production was induced by *R. solani* cell wall in the fermentation broth.



**Figure 4.** The profile of cellulase (A) and densitometry of protein pattern (B) extracted from the *T. vires* wild-type and two mutant strains by Gel-Pro (Ver.6): marker (M) Pre-stained Protein Ladder (CinnaGen™ PR901641); (c) (*T. vires* wild-type); (2) (*T. vires* M<sub>8</sub>) and (3) (*T. vires* M<sub>17</sub>).



**Figure 5.** The profile of proteins (A) and densitometry of protein pattern (B) secreted into the culture supernatants of *T. vires*: Number of 1, 2 and 3 for culture supernatants fermented with wild-type strain, mutant strain and non-inoculated culture supernatants fermentation media, respectively. "M" indicates a molecular weight marker.

**Table 1.** Comparison of extracellular protein production, Total chitinase, N-acethyl glucose aminidase, exoglucanase, endoglucanase,  $\beta$ -glucosidase and total cellulase activity (U.ml<sup>-1</sup>) of *T. virens* mutants in TFM supernatant supplemented with *R. solani* hyphal wall powder after 48 h incubation at 180 rpm and 28 °C.

	<i>T. virens</i>	<i>T. vi M<sub>8</sub></i>
Extracellular protein ( $\mu$ g.ml <sup>-1</sup> )	478.50 $\pm$ 33.21	537.46 $\pm$ 33.33
Total chitinase (U.ml <sup>-1</sup> )	5.86 $\pm$ 1.15	6.13 $\pm$ 1.03
N-acethyl glucose aminidase (U.ml <sup>-1</sup> )	0.08 $\pm$ 0.02	0.09 $\pm$ 0.02
Exo-glucanase (U.ml <sup>-1</sup> )	2.39 $\pm$ 0.33	2.06 $\pm$ 0.14
Endoglucanase (U.ml <sup>-1</sup> )	3.92 $\pm$ 0.36	3.92 $\pm$ 0.82
$\beta$ -glucanase (U.ml <sup>-1</sup> )	0.06 $\pm$ 0.01	0.07 $\pm$ 0.01
Total cellulase (U.ml <sup>-1</sup> )	1.81 $\pm$ 0.11	1.79 $\pm$ 0.23
Hyphal wall degradation enzymes activity (U.ml <sup>-1</sup> )	9.14 $\pm$ 0.42	10.63 $\pm$ 0.41

## 5. Discussion

Enzymes such as chitinases, cellulases and glucanases are considered as the most important enzymes against plant pathogens (23). In this regard, chitinolytic enzymes of *T. harzianum* have been purified and characterized (24). Additionally, the chitinase activity of *T. viride* strains has been studied under *in vitro* conditions (25). It was previously reported that *T. harzianum* produce different cellulolytic enzymes (26). The lytic enzymes, such as chitinases and cellulases, may take part simultaneously in antibiosis and parasitism process. In this regard, Elad *et al.* (18) demonstrated hyphal penetration by *Trichoderma* spp., mediated by enzyme activity. In addition, *T. harzianum* was able to parasitize *R. solani* hyphae by producing chitinase (27). According to the antagonistic results in dual culture, it could be concluded that an increase in the amount of degrading enzymes such as chitinase and cellulase enzymes alone cannot result in higher antagonistic activity of *T. virens* mutants against pathogenic fungi. Since various factors may interfere with the result, determining the extracellular protein concentration is not always simple (28). *Trichoderma* spp. are known for their ability to produce extracellular proteins and enzymes that degrade cellulose and chitin. Different strains of them also produce more than 100 different metabolites with antibiotic activities (29). Specifically, three main factors affect these measurements. Initially, the presence of non-protein components in the enzymatic solution and/or reaction medium can be a source of error if they interfere with the results of the quantitative method. Secondly, each protein dosage method is based on a different quantification and identification principle. Finally, other non-chitinase proteins in the enzyme mixture may affect the interpretation of the specific

activity results. Such differences are also because different enzymes have different primary structures, alongside different degrees of glycosylation. Thus, these factors are reflected in the response of the proteins from wild-type and mutant strains of *T. virens*.

Since fungal cell walls are composed mainly of chitin and  $\beta$ -1, 3-glucans embedded in a matrix of amorphous material (23), successful wall degradation requires the activity of more than one enzyme. Sivan and Chet (28) mentioned that a coordinated action of polysaccharides, lipases, and proteases is necessary in antibiosis. The present investigation demonstrated that *T. virens* mutant M<sub>8</sub> had highest antagonistic activity against *R. solani*. The data revealed that  $\gamma$ -radiation altered the genetic makeup of *T. virens* and greatly enhanced its biocontrol capability as reflected by increasing the inhibition zone and reducing *R. solani* growth after treatment with *T. vi M<sub>8</sub>* compared to the parental strain of *T. virens*. These results may confirm that the mutation can increase antagonistic traits of the selected mutants against *R. solani*. In summary, the results showed that antibiosis by producing volatile compounds, antibiotic metabolites, and/or extracellular enzymes might contribute to the inhibitory effects of *T. virens* or its selected mutants against *R. solani*. As noted, one of the antibiosis components is the production of degrading enzymes in antagonistic fungi, including *T. virens*. Detection of changes in the production profile of these enzymes in a mutant form with the best inhibitory potential for pathogen growth is significant, which we continued to address.

According to densitometry pattern of proteins, there was a strong link between the diversity of various chitinase proteins and the antagonistic properties of the mutant M<sub>8</sub>, not merely the amount or activity of proteins. This

study confirms that, although chitinase is generally considered as a critical enzyme for mycoparasitism since chitin is the most abundant component in many fungal cell walls, other lytic enzymes and metabolites may also be involved in the complete degradation of fungal cell walls (7). Di Pietro *et al.* (32) showed that the antifungal activity of the chitinase was synergistically enhanced when combined with gliotoxin produced by *T. virens*. Cellulase complexes secreted by *Trichoderma* species trigger ISR in plants such as tobacco, lima bean and corn, by promoting the up-regulation of ethylene (ET) or jasmonate (JA) pathways, through a concentration-dependent pattern resulting in the response (33). *Trichoderma* concentration in the roots and their interactions affect this response (34). However, the mechanism through which the *Trichoderma* cellulase-like macromolecules were produced and induced ISR in plants has still remained unclear. Interestingly, induced systemic resistance initiated by both pathogens and plant growth-promoting microbes (PGPR) such as *Trichoderma* (35). The results of the study showed that there is a difference between some enzymes or proteins produced by the strains, when fermented in the presence of the cell wall of the pathogen. Most of the biological control agents are known to produce chitinase and  $\beta$ -1, 3-glucanase enzymes which could degrade the cell wall leading to the lysis of hyphae of the pathogen (36). The pathogen cell wall and chitin induce *nag1* gene, but it is only triggered when there is contact with the pathogen (6; 37). The mutant M8 showed greater enzyme production and activity compared to the wild-type strain when incubated with *R. solani* cell wall substrate. This could be due to the fact that gamma mutation modifies some genes thus particularly affecting cell wall decomposition (38). The protein banding pattern of *T. vi* M<sub>8</sub> (Figure 5, lane 1 & 2) contained several major proteins within the molecular weight of 25-100 KDa. It was previously reported that *Trichoderma* produce different  $\beta$ -1, 3-glucanases with molecular weights of 17, 31, 36, 67, 74, 75, 78, and 110 KDa (37). A sharp band was observed in the molecular weight of 31 and 67 KDa for *T. vi* M<sub>8</sub> which were probably were related to  $\beta$ -1, 3-glucanases enzyme (37, 39). The difference in the molecular weight of  $\beta$ -1, 3 glucanases was not new as the molecular mass of  $\beta$ -glucanase appears to vary between species (40) as well as within species (41). The difference between catalytic activities of isozymes or subunits of  $\beta$ -glucanase of *Trichoderma* spp. has been reported previously. Several factors may cause the isozymes to have been listed as anomalous migration of protein on SDS-PAGE gels (42), type of growth substrate, type of reaction, and method of

purification (43). However, activation of the specific gene was a major factor influencing the number of protein bands on SDS-PAGE. Haran and other (44) showed that, depending on the strain, the chitinolytic system of *T. harzianum* may have five to seven enzymes. In the strain *T. harzianum* TM, this system includes four endochitinases (52, 42, 33, and 31 kDa), two  $\beta$ - (1, 4)-N-acetylglucosaminidases (102 and 73 kDa), and one exochitinase (40 kDa). Two 1, 4- $\beta$ -N-acetylglucoaminidase have been reported to be excreted by *T. harzianum*. Ulhoa and Peberdy (45) described the purification of these from *T. harzianum*, whose native molecular mass was estimated to be 118 KDa through gel filtration, while this value was 66 KDa through SDS-PAGE. Thus, it is suggested that the active form was a homodimer. Haran and others (44) reported a 102 KDa N-acetylglucoaminidase (CHIT 102) which was expressed by *T. harzianum* strain TM grown on chitin as the sole carbon source. It was assumed that it is essentially the same enzyme described by Ulhoa and Peberdy (45) with different estimates of its molecular mass suggested to be the result of the different procedures used. The other 1, 4- $\beta$ -N-acetylglucosaminidase, purified from *T. harzianum* strain PI, was estimated to be 72 kDa and had a pI of 4.6 (20). Haran and other (44) reported a 73 KD aglucosaminidase (CHIT 73) which was expressed and excreted when *T. harzianum* strain TM was grown on chitin as the sole carbon source, but was not detected when the fungus was grown on glucose. The activity of CHIT 73 was found to be heat-stable. N-acetyl glucoaminidase enzymes were observed with the molecular weight 69 KDa for *T. virens* wild-type and *T. vi* M<sub>8</sub> in SDS-PAGE profiles. In addition, the enzyme bands with molecular weights of 52 and 42 kDa were found in both profiles of *T. vi* M<sub>8</sub> and wild-type of *T. virens* belonging to the chitinase enzyme. Based on densitometry results, in terms of frequency of chitinase with the molecular weight of 42 kDa, there was no significant difference between the parent and mutant samples. However, in the mutant isolate, the frequency of enzyme 1, 4- $\beta$ -N-acetylglucosaminidase with the molecular weight of 69 kDa was almost twice as large as that of the parent.

## 6. Conclusion

Mutation and screening of *Trichoderma* species can increase amounts of antagonistic factors such as some lytic enzymes and their antagonistic traits (46, 47 and 48). These extracellular enzymes are induced during interactions between *Trichoderma* spp. and cell-wall materials of phytopathogenic fungi. Recently, some studies have been well carried out to explore the role of



proteolytic enzymes (49)  $\beta$ -1, 3-gluconolytic enzymes (50) and chitinase (51). However, although there are many factors that determine the behavior of a biocontrol agent such as *T. virens* (30), it is undeniably important and crucial that all these factors should ultimately lead to an increase in its efficacy against pathogenic pathogens. In other words, the antagonistic and inhibitory activity of these fungi against plant pathogenic microorganism of *R. solani* is more important. As a result, the antagonistic function of the *T. virens* isolates against *R. solani* was considered as the main criterion in the screening of the mutants and the data interpretation. In this study, the antagonistic activity in dual culture, amount and activity of cell wall degrading enzymes such as chitinase and cellulases were evaluated and attempts were made to determine the relationship between antagonism and enzymatic properties especially chitinase amount and its activity. The results revealed that mutant *T. vi* M<sub>8</sub> had the highest inhibitory against *R. solani* in dual culture. *T. virens* mutated through gamma rays resulted in enhanced growth, competition, and sporulation of the fungus concurrent with the elevated expression of genes associated with increased resistance to *R. solani* (9). Contrary to the assumption that the increase in antagonistic activity should be accompanied by an increase in the amount and activity of enzymes such as chitinase and cellulase (52), this study found that this assumption is not always correct. Nevertheless, note that other morphological and physiological traits and metabolites may be involved in the complete degradation of fungal cell walls (7). Chitinase is generally considered as a critical enzyme for mycoparasitism as chitin is the most abundant component in many fungal cell walls. On the other hand, in this study, the densitometry zymogram pattern showed that both the amount and diversity of chitinase related proteins in the selected mutant were far higher than those of the wild type. The diversity of molecular weight of proteins extracted from the *T. virens*M<sub>8</sub> (20 proteins or bands) was very high as compared to that of the wild-type (10 proteins) and mutant *T. vi* M<sub>15</sub> (2 proteins). In other words, according to these data, there is a strong link between the diversity of various chitinase proteins and the antagonistic properties of the mutant M<sub>8</sub>, not merely the amount or activity of proteins.

#### Acknowledgment

This study was supported by grants from the Radiation Application Research School (Project No. A88A099), Nuclear Science and Technology Research Institute (NSTRI), Atomic Energy organization of IRAN (AEOI).

#### References

- Maisuria KM, Patel ST. Seed germinability, root and shoot length and vigor index of soybean as influenced by rhizosphere fungi. *Karnataka J Agric Sci.* 2009; **22**:1120-1122.
- Larralde-Corona CP, Santiago-Mena MR, Sifuentes Rincón AM, Rodríguez-Luna IC, Rodríguez-Pérez MA, Shirai K, Narváez-Zapata JA. Biocontrol potential and polyphasic characterization of novel native *Trichoderma* strains against *Macrophomina phaseolina* isolated from sorghum and common bean. *Appl Microbiol Biotechnol.* 2008; **80**:67-177. doi: 10.1007/s00253-008-1532-0
- Suraiya Y, Sabiha S, Adhikary SK, Nusrat J, Sanzida R, Imranur Rahman MD. *In vitro* evaluation of *Trichoderma harzianum* (Rifai.) against some soil and seed borne fungi of economic importance. *IOSR-JAVS.* 2014; **7**(7):33-37. doi: 10.9790/2380-07723337
- Verma M, Brar SK, Tyagi RD, Surampalli RY, Valero JR. Antagonistic fungi, *Trichoderma* spp.: panoply of biological control. *Biochem Eng. j.* 2007; **37**:1-20. doi: 10.1016/j.bej.2007.05.012
- De Souza JT, Bailey BA, Pomella AWV, Erbe EF, Murphy CA, Bae Het al. Colonization of cacao seedlings by *Trichoderma stromaticum*, a mycoparasite of the witches' broom pathogen, and its influence on plant growth and resistance. *Biol Control.* 2008; **46**:36-45. doi:10.1016/j.biocontrol.2008.01.010
- Harman GE, Howel CR, Viterbo A, Chet I, Lorito M. *Trichoderma* species-Oppportunistic, avirulent plant symbionts. *Nat. Rev. Microbiol.* 2004; **2**:43-56. doi: 10.1038/nrmicro.797
- Peberdy JF. Fungal cell walls - a review. In: Kuhn PJ, Trinci APJ, Jung MJ, Goosey MW, Editors. *Biochemistry of cell walls and membranes in fungi.* Springer-Verlag, Berlin. 1990. pp.5-30. doi: 10.1007/978-3-642-74215-6
- Ghasemi S, Safaie N, Shahbazi S and Askari H. Enhancement of Lytic Enzymes Activity and Antagonistic Traits of *Trichoderma harzianum* Using  $\gamma$ -Radiation Induced Mutation. *J Agr Sci Tech.* 2019; **21**(4):1035-1048
- Mukherjee PK, Latha J, Hadar R, Horwitz BA. TmkA a mitogen-activated protein kinase of *Trichoderma virens*, is involved in biocontrol properties and repression of conidiation in the dark. *Eukaryotic Cell.* 2003; **2**(3):446-455. doi:10.1128/EC.2.3.446-455.2003
- Coventry E, Noble R, Mead A, Marin FR, Perez JA, Whips JM. Allium White Rot Suppression with Composts and *Trichoderma viride* in Relation to Sclerotia Viability. *Phytopathology.* 2006; **96**(9):1009-1021. doi: 10.1094/PHYTO-96-1009
- Marzano M, Gallo A, Altomare C. Improvement of biocontrol efficacy of *Trichoderma harzianum* vs. *Fusarium oxysporum f. sp. lycopersici* through UV-induced tolerance to fusaric acid. *Biol Control.* 2013; **67**(3):397-408. doi: 10.1016/j.biocontrol.2013.09.008
- Mohamadi AS, Shahbazi S, Askari H. Investigation of  $\gamma$ -radiation on morphological Characteristics and antagonist potential of *Trichoderma viride* against *Rhizoctonia solani*. *Biol Control.* 2014; **34**(3):324-334. doi:10.15171/ijb.1224
- Rey MD, Benítez J. Improved antifungal activity of a mutant of *Trichoderma harzianum* CECT 2413, which produces more extracellular proteins. *Appl Microbiol Biotechnol.* 2001; **55**:604-608. doi: 10.1007/s00253-003-1538-6
- Shahbazi S, Ispareh K, Karimi M, Askari H, Ebrahimi MA. Gamma and UV radiation induced mutagenesis in *Trichoderma*

- reesei* to enhance cellulases enzyme activity. *Intl. J. Farm. & Alli. Sci.* 2014;543-554
15. Atalla RH, Hackney JM, Uhlin I and Thompson NS. Hemicelluloses asstructure regulators in the aggregation of native cellulose. *Int j Biol Macromol.* 1998;15:109-112. doi:10.1016/0141-8130(93)90007-9
  16. Barr BK, Hsieh YL, Ganem B and Wilson DB. Identification of Two Functionally Different Classes of Exocellulases. *Biochemistry.* 1996;35:586-592. doi:10.1021/bi9520388
  17. Elad Y, Chet I, Henis Y. Degradation of plant pathogenic fungi by *Trichoderma harzianum*. *Can J Microbiol.* 1982;28:719-725. doi:10.1139/m82-110
  18. Elad Y, Chet I, Boyle P, Henis Y. Parasitism of *Trichoderma* spp. on *Rhizoctonia solani* and *Sclerotium rolfsii* Scanning electron microscopy and fluorescence microscopy. *Phytopathology.* 1983;73:85-88. doi: 10.1094/Phyto-73-85
  19. Shahbazi S, AhariMostafavi H, Ebrahimi MA, Askari H, Mirmajlessi M, Karimi M. Enhancement of Chitinase Gene Activity In Mutated *Trichoderma harzianum* via Gamma Radiation. *CropBiotech.* 2013;5:33-40.
  20. Bradford MM. A rapid and sensitive for the quantification of microgram of protein utilizing the principle of protein-dye binding. *Anal biochem.* 1976;72:248-258. doi: 10.1006/abio.1976.9999
  21. Zeilinger S, Galhaup C, Payer K, Woo S, Mach R, Fekete Csaba L, Lorito M, Kubicek CP. Chitinase gene expression during mycoparasitic interactions of *Trichoderma harzianum* with its host. *Fungal Genet Biol.* 1999;26:131-140. doi: 10.1006/fgbi.1998.1111
  22. Laemmli UK. Cleavage of structure proteins during the assembly of the head of bacteriophage T4. *Nature.* 1970;227:680-685. doi: 10.1038/227680a0
  23. Chet I, Baker R. Isolation and biological potential of *Trichoderma hamatum* from soil naturally suppressive of *Rhizoctonia solani*. *Phytopathology.* 1981;71:268-290. doi: 10.1094/Phyto-71-286
  24. Lorito M, Harman GE, Hayes CK, Broadway RM, Tronsmo A, Woo SL, Di Pietro A. Chitinolytic enzymes produced by *Trichoderma harzianum*: antifungal activity of purified endochitinase and chitobiosidase. *Phytopathology.* 1993;83(3):302-307. doi: 10.1094/Phyto-83-302
  25. Domsch KH, Gams W, Anderson T-W. *Trichoderma*. Compendium of Soil fungi. *Academic Press.* 1980;1:795-709.
  26. Petenbauer CK, Heidenreich E. Effect of benomyl and benomyl resistance on cellulase formation by *Trichoderma reesei* and *Trichoderma harzianum*. *Can J Microbiol.* 1992;38:1292-1297. doi: 10.1139/m92-213
  27. Benhamou N, Chet I. Hyphal interaction between *Trichoderma harzianum* and *Rhizoctonia solani*: ultrastructure and gold chemistry of the mycoparasitic process. *Phytopathology.* 1993;83:1062-1071. doi: 10.1094/Phyto-83-1062
  28. Sivan A, Chet I. Degradation of fungal cell wall by lytic enzymes of *Trichoderma harzianum*. *J. Gen. Microbiol.* 1989;135:675-682. doi: 10.1099/00221287-135-3-675
  29. Zaia DAM, Zaia CTBV, Lichtig J. Determination of total protein via spectrophotometer: advantages and disadvantages of existing methods. *Quim Nova.* 1998;21(6):787-793. doi:10.1590/s0100-40421998000600020
  30. Sivasithamparam K, Ghisalberti EL. Secondary metabolism in *Trichoderma* and *Gliocladium*. In: Kubicek CP, Harman GE, editors. *Trichoderma and Gliocladium*. Taylor and Francis, London, 1998, pp139-191.
  31. Gusakov AV. Alternatives to *Trichoderma reesei* in biofuel production. *Trends Biotechnol.* 2011;29:419-425. doi: 10.1016/J.TIBTECH.2011.04.004.
  32. Di Pietro A, Lorito M, Hayes CK, Broadway RM, Harman GE. Endochitinase from *Gliocladium virens*: Isolation, characterization and synergistic antifungal activity in combination with gliotoxin. *Phytopathol.* 1993;83:308-313. doi: 10.1094/Phyto-83-308
  33. Hermosa MR, grondona I, Iturriaga JM, Diaz C, Castro E, Monte E *et al.* Molecular characterization and Identification of biocontrol isolate of *Trichoderma* spp. *App. Environ. Microbiol.* 2000;66:1890-1898. doi: 10.1128/AEM.66.5.1890-1898.2000
  34. Segarra G. Proteome, salicylic acid, and jasmonic acid changes in cucumber plants inoculated with *Trichoderma asperellum* strain T34. *Proteomics.* 2007;7:3943-3952. doi: 10.1002/pmic.200700173.
  35. Djonovic S, Pozo MJ, Dangott LJ, Howell CR, Kenerley CM. Sm1, a proteinaceous elicitor secreted by the biocontrol fungus *Trichoderma virens* induces plant defense responses and systemic resistance. *Mol Plant Microbe Interact.* 2006;19:838-853. doi: 10.1094/MPMI-19-0838.
  36. Sangle UR, Bambawale OM. New strains of *Trichoderma* spp. strongly antagonistic against *Fusarium oxysporum* f. sp. *sesami*. *J Mycol Plant Pathol.* 2004;34(1):107-109.
  37. Lorito M, Harman CK, Di Pietro A. Purification, characterization and synergistic activity of a glucans 1, 3-beta glucosidase and an N-acetylglucosaminidase from *Trichoderma harzianum*. *Phytopathol.* 1994;84:398-405. doi: 10.1094/Phyto-84-398
  38. Dana M, Mejias R, Mach RL, Benitez T, Pintor-Toro JA, Kubicek CP. Regulation of chitinase 33 (*chit33*) gene expression in *Trichoderma harzianum*. *Curr Genet.* 2001;38:335-342. doi: 10.1007/s002940000169
  39. Noronha EF, Ulhoa CJ. Characterization of a 29-kDa L-1, 3-glucanase from *Trichoderma harzianum*. *FEMS Microbiol. Lett.* 2000;183(1):119-123. doi: 10.1111/j.1574-6968.2000. Tb 08944
  40. Nobe K, Sakai Y, Nobe H, Takashima J, Paul RJ, Momose K. Enhancement effect under high glucose conditions on U46619-induced spontaneous phasic contraction in mouse portal vein. *J Pharmacol Exp Ther.* 2003;304:1129-1142. doi: 10.1124/jpet.102.040964
  41. Pitson SM, Seviour RJ, McDougall BM. Noncellulolytic fungal L-glucanases: their physiology and regulation. *Enzyme Microb. Technol.* 1993;15:178-192. doi:10.1016/0141-0229(93)90136-p
  42. Mrsa V, Klebl F, Tanner W. Purification and characterization of the *Saccharomyces cerevisiae* Bg12 gene product, a cell wall endo- $\beta$ -1, 3-glucanase. *J Bacteriol.* 1993; 175: 2102-2106. doi:10.1128/jb.175.7.2102-2106.1993
  43. Amano Y, Masahiro S, Kazutosi N, Eiichi H, Takahisa K. Fine substrate Specificities of Four Exo-Type Cellulases Produced by *Aspergillus niger*, *Trichoderma reesei*, and *Irpex lacteus* on (1 $\rightarrow$ 3), (1 $\rightarrow$ 4)- $\beta$ -D-Glucans and Xyloglucan. *J Biochem.* 1996;120(6):1123-1129. doi: 10.1093/oxfordjournals.jbchem.a021531
  44. Haran S, Schickler H, Oppenheim A, Chet I. Differential expression of *Trichoderma harzianum* chitinases during mycoparasitism. *Phytopathology.* 1996;86:980-985. doi: 10.1094/Phyto-86-980
  45. Ulhoa CJ, Peberdy JF. Regulation of chitinase synthesis in *Trichoderma harzianum*. *J Gen Microbiol.* 1991;137:2163-

2169. doi:10.1099/00221287-137-9-2163
46. Jun H, Bing Y, Keying Z, Xuemei D, Daiwen C. Strain improvement of *Trichoderma reesei* Rut C-30 for increased cellulase production. *Indian J Microbiol.* 2009;**49**:188-195. doi: 10.1007/s12088-009-0030-0
47. Zhang J, Zhang G, Wang W and Dongzhi W. Enhanced Cellulase Production in *Trichoderma Reesei* RUT C30 via Constitution of Minimal Transcriptional Activators. *Microb Cell Fact.* 2018 ;**17**(1):75. doi: 10.1186/s12934-018-0926-7.
48. Silva J.C.R., Salgado J.C.S., Vici A.C. *et al.* A novel *Trichoderma reesei* mutant RP698 with enhanced cellulase production. *Braz J Microbiol.* 2020;**51**:537–545. doi: 10.1007/s42770-019-00167-2.
49. Kredics L, Antal Z, Szekeres A, Hatvani L, Manczinger L, Vagvolgyi C, Nagy E. Extracellular proteases of *Trichoderma* species. A review. *Acta Microbiol Immunol Hung.* 2005;**52**:169–184. doi: 10.1556/AMicr.52.2005.2.3
50. Kubicek CP. Molecular biology of biocontrol *Trichoderma*. in: Aurora, DK, editor. fungal biotechnology in agricultural, food, and environmental applications. Marcel Dekker, New York, 2004;p.135-145.
51. Hoell LA, Klemsdal SS, Vaaje-Koistad G, Hom SJ, Eijsink VGH. Over expression and characterization of a novel chitinase from *Trichoderma atroviride* strain PI. *Biochim Biophys Acta* 2005;**1748**:180-190. doi: 10.1016/j.bbapap.2005.01.002
52. Jong-Min Baek Charles R, Howell C, Kenerley M. The role of an extracellular chitinase from *Trichoderma virens* Gv29-8 in the biocontrol of *Rhizoctonia solani*. *Curr Genet.* 1999;**35**:41-50. doi: 10.1007/s002940050431